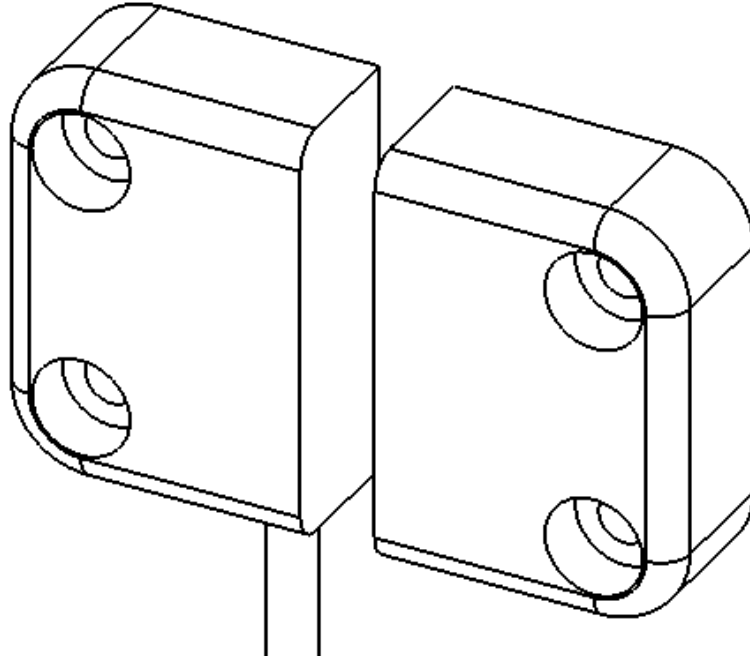


IDEL

S E N S O R



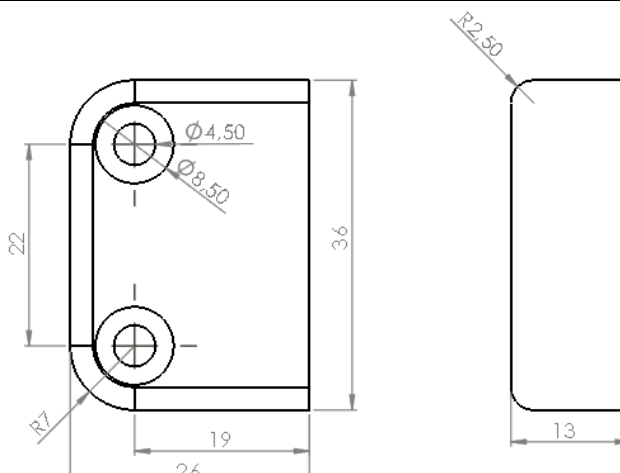
IMS-S-P-1-0-0-2

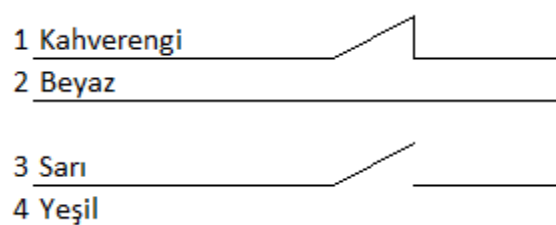
MANYETİK SENSÖR

VERİ SAYFASI

Ürün Kodu	IMS-S-P-1-1-0-2
Açıklama	1NO 1NC Kontaklı, kablolu manyetik sensör

Genel Özellikler	
Paket İçeriği	Sensör ve aktüatör
Sensör Prensibi	Manyetik
Normalde Açık Kontak Sayısı	1
Normalde Kapalı Kontak Sayısı	1
Mesaj Kontakları Sayısı	0
Bağlantı Tipi	2m Kablo (4x0,22)
Ölçüler (mm)	13X26X36

Teknik Çizim (Ölçüler mm cinsindedir)
 <p>The technical drawing shows two views of the sensor. The front view (left) is a rectangular component with a rounded top-left corner. It has a total width of 26 mm and a total height of 36 mm. The top-left corner has a radius of R7. There are two circular features on the top edge, each with a diameter of 4.50 mm. The distance between the centers of these two circles is 19 mm. The distance from the left edge to the center of the top-left circle is 22 mm. The bottom-left corner has a radius of R2.50. The side view (right) shows a rectangular component with a width of 13 mm and a rounded top-left corner with a radius of R2.50.</p>

Bağlantı Şeması
 <p>The wiring diagram shows four wires connected to the sensor. The wires are labeled as follows: 1 Kahverengi (Brown) 2 Beyaz (White) 3 Sarı (Yellow) 4 Yeşil (Green)</p>

Kod Açıklaması

IMS S P 1 1 0 2

GÖVDE ÖLÇÜSÜ

6	Ø6
8	M8
10	M10
12	M12
0	Ø14
18	M18
K	8X15X32
S	13X26X36
L	13X25X88

BAĞLANTI ŞEKLİ

2	2m
5	5m
S8	M8 Soket

MALZEME

P	PLASTİK
M	METAL

LED

0	YOK
1	VAR

NO KONTAK SAYISI

0	0
1	1
2	2

NC KONTAK SAYISI

0	0
1	1
2	2

İDEL OTOMASYON ELK. ELKTR. İTH. İHR. SAN.VE TİC. LTD. ŞTİ

Oruçreis Mah. Giyimkent Sit.18. Sokak No: 60A/62A Esenler / İST.

Telefon : +90 850 205 34 39 Fax: +90 212 235 6991

E-posta: info@idelotomasyon.com

www.idelotomasyon.com